

- 1
- 2
- 3
- 4
- 5
- 6
- 7
- 8
- 9
- 10
- 11
- 12
- 13
- 14
- 15
- 16
- 17
- 18

**MATERIAL**

Aluminium, epoxy resin coating, RAL 9005 black colour, matte finish.

Socket cap screws DIN 912

Stainless Steel AISI 304

Hex nuts DIN 985

Stainless Steel AISI 304

Self-locking via polyamide ring

**STANDARD EXECUTIONS**

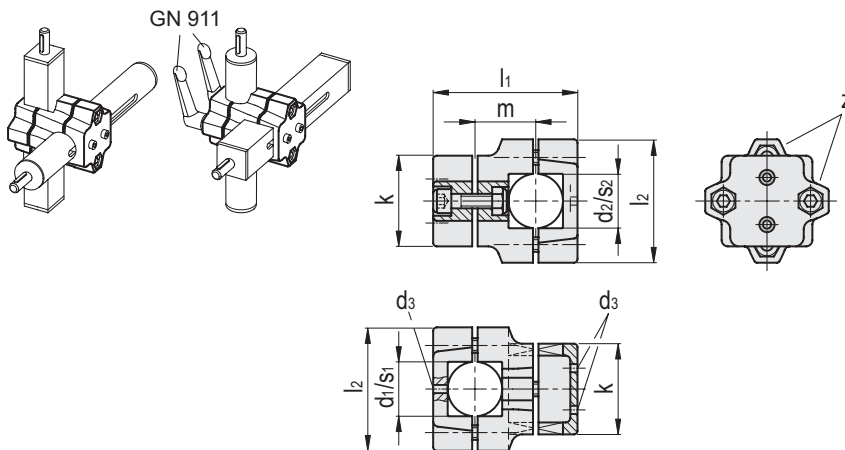
- GN 134.2-B-B: two round holes.
- GN 134.2-B-V: round hole and square hole.
- GN 134.2-V-V: two square holes and one connector nut.

**FEATURES AND APPLICATIONS**

Two-way linear actuator connectors GN 134.2 are based on two-way connector clamps. The additionally provided mounting holes are used to connect to the drive key of a linear actuator.

The mounting holes d3 for the drive key are always located in the bore d1 or the square s1 in the one-axis system. Centering bushings in the through-hole eliminate the axial clearance. The width of the s1 square is dimensionally aligned with the play of the square linear actuators.

For quick clamping without tools, the socket cap screws can be replaced by the adjustable hand levers GN 911 (see page ) listed in the table as accessories.



Conversion Table	
1 mm = 0.039 inch	
d1	
mm	inch
30	1.17
40	1.56
50	1.95

METRIC

**GN 134.2-B-B**

Code	Description	d1	d2	d3	k	l1	l2	m	z	Z	Clamping kit	⚖
GN.44481	GN 134.2-B30-B30-50-2-S	B 30	B 30	M4	50	79.5	68	33.5	M8-30	GN 911-63 / GN 911-78	326	
GN.44482	GN 134.2-B30-B30-60-2-S	B 30	B 30	M4	60	109	79	50	M8-50	GN 911-63 / GN 911-78	698	
GN.44485	GN 134.2-B40-B40-60-2-S	B 40	B 40	M5	60	109	79	50	M8-50	GN 911-63 / GN 911-78	614	
GN.44486	GN 134.2-B40-B40-76-2-S	B 40	B 40	M5	76	125	98	55	M10-50	GN 911-78 / GN 911-92	975	
GN.44489	GN 134.2-B50-B50-76-2-S	B 50	B 50	M6	76	125	98	55	M10-50	GN 911-78 / GN 911-92	885	

**GN 134.2-B-V**

Code	Description	d1	s2	d3	k	l1	l2	m	z	Z	Clamping kit	⚖
			Square hole									
GN.44483	GN 134.2-B30-V30-50-2-S	B 30	30	M4	50	79.5	68	33.5	M8-30	GN 911-63 / GN 911-78	314	
GN.44484	GN 134.2-B30-V30-60-2-S	B 30	30	M4	60	109	79	50	M8-50	GN 911-63 / GN 911-78	682	
GN.44487	GN 134.2-B40-V40-60-2-S	B 40	40	M5	60	109	79	50	M8-50	GN 911-63 / GN 911-78	585	
GN.44488	GN 134.2-B40-V40-76-2-S	B 40	40	M5	76	125	98	55	M10-50	GN 911-78 / GN 911-92	891	
GN.44490	GN 134.2-B50-V50-76-2-S	B 50	50	M6	76	125	98	55	M10-50	GN 911-78 / GN 911-92	773	

**GN 134.2-V-V**

Code	Description	s1	s2	d3	k	l1	l2	m	z	Z	Clamping kit	⚖
		Square hole	Square hole									
GN.44491	GN 134.2-V30-V30-50-2-S	30	30	M4	50	79.5	68	33.5	M8-30	GN 911-63 / GN 911-78	300	
GN.44492	GN 134.2-V30-V30-60-2-S	30	30	M4	60	109	79	50	M8-50	GN 911-63 / GN 911-78	666	
GN.44493	GN 134.2-V40-V40-60-2-S	40	40	M5	60	109	79	50	M8-50	GN 911-63 / GN 911-78	556	
GN.44494	GN 134.2-V40-V40-76-2-S	40	40	M5	76	125	98	55	M10-50	GN 911-78 / GN 911-92	969	
GN.44495	GN 134.2-V50-V50-76-2-S	50	50	M6	76	125	98	55	M10-50	GN 911-78 / GN 911-92	920	

Tube connectors